

TOWN OF SENSATIONS!

A celebrating community:

OLD-TIME SENSATIONS

The Dumulon house and Saint-Georges Russian Orthodox Church.

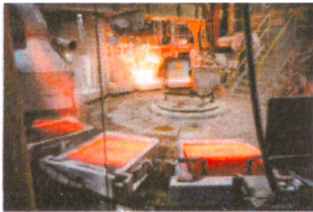


The town's first general store immerses you into the 1920's atmosphere where the first explorers of the region arrived, while the church reminds us the presence of ethnic and cultural diversity which appeared in Rouyn-Noranda's beginnings with its immigration museum.

191, du lac avenue, Rouyn-Noranda
201, Taschereau Ouest street
819 797-7125
www.maison-dumulon.ca

STRONG SENSATIONS

Xstrata Copper, Horne Smelter



Exploited in 1927, this complex is still one of the most important world-wide producers of copper and precious metals. See a live copper-pouring!

1, Carter street, Rouyn-Noranda
1 888 797-3195
www.xstrata.com

HIGH SENSATIONS

Aiguebelle National Park



Walk on 2,7 billion years, where the waters parted! Follow the multiple panoramic pedestrian trails, paddle in a faulted lake, observe the diversified wildlife or stay in a rustic camp.

1702, rang Hudon, Mont-Brun area
1 800 665-6527
www.parcquebec.com

ELECTRIFYING SENSATIONS

Hydro-Quebec telecontrol and training Center



Unique in Quebec! Discover the route electricity takes to go from the Central to homes. With a multimedia projection, hear facts and rumours going around concerning the Outaouais River.

1095, Saguenay street, Rouyn-Noranda
1888 797-3195
www.hydro.qc.ca/visitez.html

Lake Joannès Educational Center
703, des Cèdres road, McWatters area 819
762-2369 / 819 762-8867 www.afat.qc.ca

Rouyn-Noranda Exposition Center
425, du Collège boulevard
819 762-6600
www.cern.ca

La Fontaine des Arts
25, Principale avenue
819 764-5555
www.fontainedesarts.qc.ca

L'Écart ... lieu d'art actuel
167, Murdoch avenue
819 797-8738
www.lecart.org

Botanical Park "À Fleur d'eau"
325, Principale avenue
819 797-8753 / 819 762-3178
www.corpodesletes.ca

Kérygma Biblical Center
76, Cardinal-Bégin East street
819 764-4660
www.diocese-rouyn-noranda.org

Abitibi-Karting Circuit
4003, McWatters boulevard, McWatters area
819 762-8889
www.kartingabitibi.com

Old-Rouyn and Old-Noranda Historical Interpretation Circuit
Border Osisko Lake
1 888 797-3195
www.tourismerouyn-noranda.ca